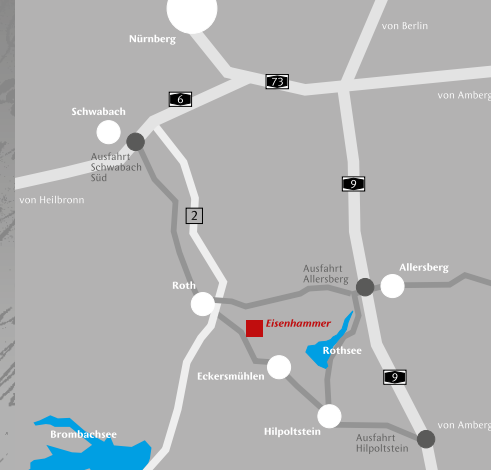


The exhibition "From Ore to Iron" is another component of the museum located in the former sawmill. It initially shows where the key commodity, iron ore was to be found and how it was recovered.

A simulated mine tunnel leads to the area dealing with iron smelting. Models of a charcoal stack and a smelting furnace illustrate how from the Celts to the Middle Ages malleable iron was won from iron ore. In an area devoted to ironworking there are a number iron exhibits ranging from items of combat such as chain mail, armor or sword to everyday objects. Additionally there are various special exhibitions in the former stables.



Landkreis  
Roth



Landkreis  
Roth

City of Roth

In the  
Franconian  
Lake District



## Exhibition "From Ore to Iron"



### Opening times

March  
Sat., Sun. and public holidays, 1pm – 5pm  
1st April – 31st October  
Wed. to Sun. and German public holidays  
1pm – 5pm and by arrangement

### Admission prices

Adults 3 Euro  
Children 1 Euro  
Family ticket 5 Euro  
Adult group  
more than 10 people 2 Euro

### Blacksmith demonstrations

10 euros per group, by arrangement  
Tel.: +49 9171 81-2020 and  
+49 9171 81-1329

### Museum

#### Historical Forge, Eckersmühlen

Eisenhammer 1  
91154 Roth-Eckersmühlen  
Tel.: +49 9171 81-2020 and 81-1329

### Sponsors

Landratsamt Roth, Stadt Roth

### Fotos

Oliver Frank

### Information

Landratsamt Roth  
Kultur und Tourismus  
Weinbergweg 1, 91154 Roth  
Tel.: +49 9171 81-1329,  
Fax: +49 9171 81-1399  
Email: [tourismus@landratsamt-roth.de](mailto:tourismus@landratsamt-roth.de)  
[www.eisenhammer-eckersmuehlen.de](http://www.eisenhammer-eckersmuehlen.de)



**Parking space for 20 cars and  
1 Bus**

**1 space for disabled people**



## Museum Historical Forge Eckersmühlen

Museum  
Historischer  
Eisenhammer  
Eckersmühlen

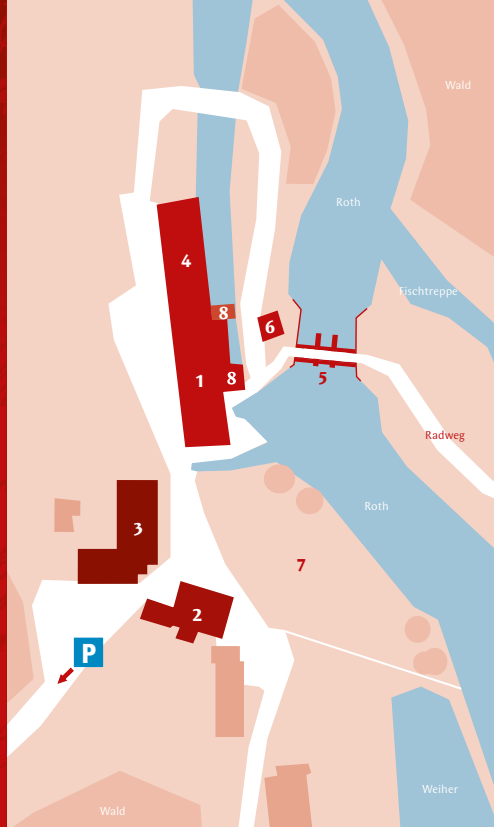
Scientific research  
and documentation;  
Museum Industriekultur  
Nürnberg,  
Tel.: +49 911 2313648

Concept: Bienert Design  
Layout: designlöwen  
[www.designloewen.com](http://www.designloewen.com)

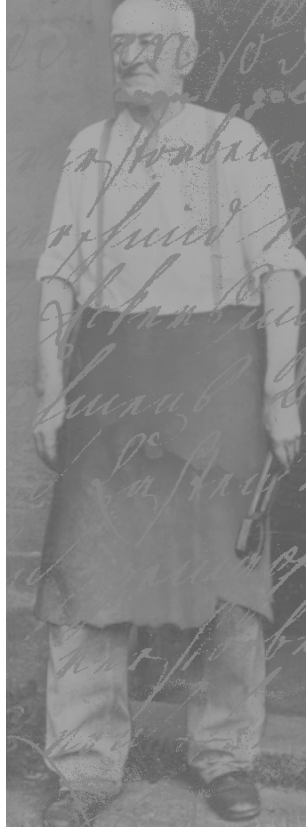
[www.eisenhammer-eckersmuehlen.de](http://www.eisenhammer-eckersmuehlen.de)



- 1 Forge
- 2 Main House
- 3 Former Stable
- 4 Exhibition „From Ore to Iron“
- 5 Weir
- 6 Control House for weir
- 7 House garden
- 8 Turbines

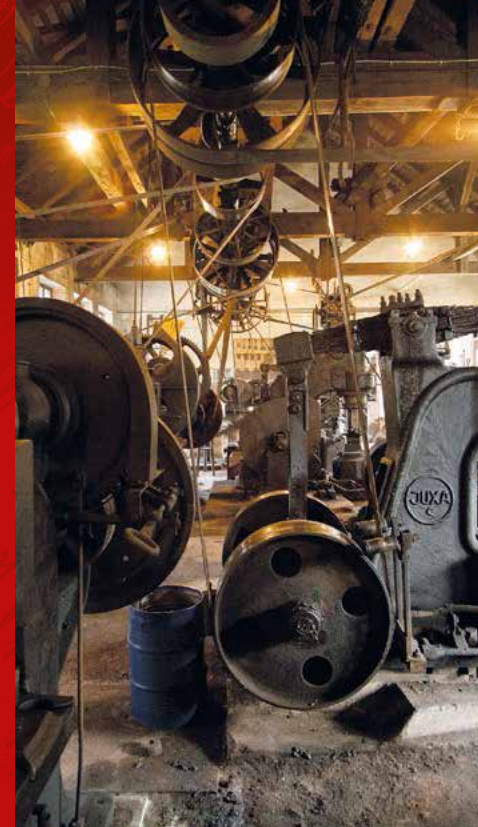


In 1775 Johann Michael Schöff I. took over the, at that time, indebted property. Unlike his predecessors, he was operator and owner in one person. Over several generations the forge Masters and entrepreneurs Schöff came to great prosperity at the Eisenhammer. The period of affluence came to an end as competition from mass produced goods of the factories grew. Added to this changes in the pattern of demand led to the cessation of operations in 1974. Thanks to Fritz Schöff V the forge remained operational until 1985 when it was converted into the industrial museum where today regular blacksmith presentations take place.



**Cycle and Trail path to the Rothsee Lake**  
4 km, to Roth 5 km

**Refreshments in Eckersmühlen 1 km, in Hofstetten 1,5 km**



**In the main house, which was built in 1699, there is a chronicle of the life of the master blacksmith Fritz Schöff.**



Built in the years 1699 to 1700, the house with its elaborately crafted timber framed exterior lays testimony to the distinct class consciousness of the hammer masters. Several conversions, extensions and renovations each in the style of its time changed the appearance and character of the house.

## Museum Historical Forge Eckersmühlen

**We present craftsmanship from yesteryear**

**Special tours for groups the whole year round upon request**  
Tel.: +49 9171 81-1329

The former Schöff forge lies 30 kilometers south of Nuremberg, close to the village of Eckersmühlen. This gem of industrial history situated on the river Roth is now a lively museum, where the art of the blacksmith and the use of the red-hot iron is impressively demonstrated. For over five generations the Eisenhammer was owned by the family Schöff, a widely ramified blacksmith dynasty.



Fritz Schöff

**Electrically self-sufficient**

**Exhibition of tools from a driving belt factory**

**75 different agricultural implements**

Water power operates the massive power hammers. A turbine sets the main shaft moving. The power is transferred by leather transmission belts to the individual hammers. Visitors can view the production of these transmission belts, another long forgotten craft, in a separate room.

## Residence of the forge Masters

Extensions and the removal of timber framing in the 1930's, robbed the former manor house of its baroque splendor.

Following the final closure of the Eisenhammer, Fritz Schöff V retired and devoted himself exclusively to research of his family and local history.

In this part of the museum the living environment of this last of the Schöff Dynasty is displayed in a visible and palpable way.